

July Meeting

Hanover Country Club

July 19, 2004

10:45 AM - Speaker

11:30 AM - Lunch

12:30 PM - Shotgun

5:00 PM - Dinner

There will be a CPGCSA Board of Directors meeting at 8:30 AM.

Golf Course Profile

The Hanover Country Club golf course was built in 1923. The golf course architect and builder was J. W. Gitt. The founding members of the club became involved with the "In-house" design and were members of some of the great classic golf courses, such as Pine Valley, Oakmont, and Augusta. The course is undulating and tree-lined with very small and challenging greens.

Superintendent Profile

Bill Brooks began working at Twin Lakes Golf Course in Allentown, PA in 1978 during the summer months. His interest grew and he decided to pursue a career in the business. He attended Penn State and graduated with a BS in Agronomy in May 1988. Upon graduation, he began working at Lehigh Country Club as Assistant Superintendent and then in 1992 moved to Corning Country Club, NY as Superintendent. It was at Corning where Bill gained LPGA tournament experience in hosting the annual Corning Classic. He moved to Hanover Country Club in January 1993 and the members at Hanover have put up with him ever since!

July Education

The speaker for the July meeting will be Mr. Daniel Schlegel. He is an architect and a partner with Ault, Clark & Associates Golf Course Architects. He will be speaking on the topic of the design influences and characteristics of the Golden Age of architects.

Mid-Atlantic USGA Update

Recovery: What Does It Take?

Cooperation and Patience Are the Keys

By Keith Happ, Senior Agronomist

Many courses that suffered winter injury have recovered well. The exceptions are those facilities that did not close or limit play on damaged surfaces. Areas that have not recovered will offer less than ideal conditions potentially for the rest of the year. This reemphasizes the fact that patience and cooperation exercised by golfers early in the year provide positive results.

One positive aspect of winter injury is that the bentgrass populations have increased in many of the damaged areas. Bentgrass has a much greater tolerance of cold temperature stress than *Poa annua* and this will help minimize the potential for winter damage in future seasons. However, *Poa annua* also germinated along with new bentgrass seed so the key this summer will be maintaining realistic expectations regarding surface conditioning with this combination of seedling turf. Green speed is always an issue, but it should not dominate surface preparation strategies, especially on putting greens recovering from winter damage. Do not push the young, immature turf too hard this summer.

Some turf managers were not able to implement control strategies to limit *Poa annua* flowering due to the damage suffered this past winter. After the *Poa annua* flowers, it is at its weakest point in its life cycle. Aggressive grooming, vertical mowing, or low mowing could result in catastrophic turf decline if weather conditions become harsh. The use of conservative and basic maintenance strategies will be necessary this summer. Use slightly higher heights of cut but carefully regulate turf growth. Roll infrequently to prepare for special events. Top-dress lightly and frequently to help protect the new turf. Brush the surfaces rather than using mechanical methods of surface

.....continued on page 3.....

Inside This Issue

President's Message	Page 2
Directions to Hanover Country Club	Page 2
Membership News	Page 3
Heather and Gorse	Page 5
Green Sheet Supporters	Page 11

President's Message

If William S. Flynn could only meet Dave Frey and Jeff Granitz and see the condition of his legacy. I think he would be more than pleased. Dave and Jeff have preserved a timeless golf course. I am grateful to all the superintendents and clubs for their effort and hospitality this year. In July we head south to Hanover Country Club to see the honorable Mr. Brooks and in August we go head to head against Philly in the Supers Cup.

So far we seem to be managing fairly well through this year. The weather doesn't appear quite as wet as last year. Hyperodes are running rampant in some areas and look like they are here to stay. The Primo/Proxy discussion at Harrisburg was interesting. It never fails most never try exactly the same thing and if we do we never get the same results. Soon it will be 4th of July and that always is the weekend that some battle presents itself. I always think if I make it to August 15th I'm home free, but boy can that be a long six weeks. Just a reminder of the reservation policy, the deadline is for the planning purposes of the host club. Please just call if your form is in the mail and I would not recommend anyone ever just showing up and walking onto the course to find a foursome again!

Pete Ramsey



Jeff Borger from Penn State University talks with members at the June Meeting at Country Club of Harrisburg.

Directions to Hanover Country Club

200 E. Water Street
Abbottstown, PA 17301

Hanover Country Club is located on Route 30, 1/4 mile east of the Abbottstown square (between Gettysburg and York).

From Harrisburg: Take 15 South to 194 South to Route 30 East. Club entrance is 1/4 mile east of the Abbottstown square on your left.

From York: Take Route 30 West. As you approach Abbottstown, look for a Rutter's store on your left. Entrance to club is about 1/4 mile from the Rutter's on your right. If you get to the Abbottstown square, you went too far. Proceed around the square and go east on Route 30. Club entrance is 1/4 mile on your left.

President/Bylaws
William P. Ramsey
Range End Golf Club
(717) 432-3711
regc@pa.net

Vice President/Social/Scholarship
Faron J. Stoops
Waynesboro Country Club
(717) 762-6370
fstoops@comcast.net

Secretary/Treasurer/Chapter Relations
John M. Colo
Country Club of York
(717) 843-2190
jc5288@aol.com

Past President/Social/Scholarship
William E. Brooks
Hanover Country Club
(717) 259-8706
wbrooks547@aol.com

Golf
Daniel Brickley
Lebanon Country Club
(717) 273-1944
djb301@yahoo.com

Daniel Kury
Copper Beach Golf & Swim Club
(717) 246-8068
kury@suscom.net

Education/Career Development
Chris K. Martin
Crossgates Golf Club
(717) 872-7415
cmartin5997@comcast.net

Thomas E. Mahute
Affiliate Representative
(717) 892-1455
tmahute@fisherandson.com

Membership
Stephen J. Ludwig, CGCS
Gettysburg Country Club
(717) 334-0441
sludwig@blazenet.net

James V. Byrne
Affiliate Representative
(717) 786-0547
jbhelenachemical@comcast.net

Media/Public Relations
D. Mark MacDonald
Regents Glen Country Club
(717) 505-4664
rgmaint@earthlink.net

Nominations
Anthony P. Goodley, CGCS
Heritage Hills Golf Resort
(717) 755-1919
grounds@bhgr.com

Newsletter
Wanda S. Fry
(717) 279-0368
cpgcsa@nbn.net

PAST PRESIDENTS

George Morris
Edward A. Tabor
Riley E. Heckert
Richard T. Funk
Harry L. Latshaw
Daniel L. Snowberger
Charles A. Barley
Richard Wilt
Fred N. Baker
Richard J. Suttles
John J. Boyd
Y. Lewis Payson
C. William Black, CGCS
Dwight H. Brubaker
Byron F. Knoll, Jr.
Michael Wilt
Charles H. Cadiz, CGCS
Kenneth R. Dietrich, CGCS
Michael C. Hair
Cameron G. Henderson
James N. MacLaren
David P. Portz, CGCS
John P. McCormick
David C. Weitzel, CGCS
Fred Heinlen
Terry L. Wueschinski, CGCS
Greg Borzok
Gregory C. Fantuzzi, CGCS
James W. Jones, CGCS
William G. Wall
Robert Beyer, CGCS
Jeffrey L. Fry, CGCS
John A. Chassard
David M. Rafferty
Anthony P. Goodley, CGCS
Samuel R. Snyder, CGCS
John Dougherty
H. Jim Loke, CGCS
John L. Gehman
Theodore S. Zabrenski
Thomas C. Ocepek, CGCS
Daniel W. Achenbach
William E. Brooks

Membership News

The following individual has applied for membership into our association. If there are no written objections within the next seven days, he will be accepted into CPGCSA at the next meeting.

Jason Shambaugh, Assistant Superintendent
Hanover Country Club..... Class C

We would like to welcome the following individuals into our association.

Tim Davisson, President
Davisson Golf, Inc. Class AF

Jeff Green, Assistant Superintendent
Lebanon Country Club Class C

James Harbold, Assistant Superintendent
Gettysburg Country Club..... Class C

Mark Gutshall, President
Land Studies, Inc. Class AF

Matt Malick, Superintendent
Hershey Golf Club..... Class B

Ron Nichols, Sales Representative
Davisson Golf, Inc. Class AF

If you know of anyone who is interested in membership into the association, please have them contact Steve Ludwig at (717) 334-0441 or Jim Byrnes (717) 786-0547.

Continued Well Wishes to:

George Hamilton and his family. You are always in our thoughts and prayers.

Pond Management Company

Algae and Weed Control



Authorized Otterbine
Sales & Service Center

- Custom Management Programs
- Aerating Fountains
- Water Quality Monitoring
- Competitive Pricing
- Professional Staff

Aquatic Environment Consultants
Phone: 717-264-9778

Providing Quality Pond and Lake Management Since 1987



The "Green Industry" Supplier
SUPERIOR PRODUCTS FOR THE
TURF & HORTICULTURAL PROFESSIONAL

THOM MAHUTE BOB SELTZER
717-892-1455 610-704-4756

Turf & Horticultural Control Products
Fertilizer
Seed & Soil Amendments
Top Dressing



EarthWorks
Natural Organic Products



www.fisherandson.com

USGA.....continued from page 1

preparation that could wound or damage weakened *Poa annua* or new bentgrass.

We are now entering the period of the season when most turf managers are trying to survive what Mother Nature has in store for the summer. Reevaluate expectations this season and exercise patience if the turf has to be conditioned and presented differently from the norm, especially on greens recovering from winter problems. As the saying goes, 'slow grass is better than no grass.'

If the Mid-Atlantic Region agronomists can be of assistance, contact Stan Zontek (szontek@usga.org) or Darin Bevard (dbevard@usga.org) at 610/ 558-9066 or Keith Happ (khapp@usga.org) 412/ 341-5922.

Please contact Wanda with any employment or address changes, so that we can keep our records up to date.

Golf Report

The golf results from the June Meeting at Country Club of Harrisburg are as follows:

1st Place 120

Jim MacLaren
Pete Ramsey
Joe Sellers
Michael Bedi

2nd Place 126

Jeff Derr
Scott Gray
Dave Weitzel
Dan Brenner

3rd Place 131

Jim Byrne
Chuck Cadiz
John Dougherty
Scott Keener

The golf format at the July meeting at Hanover Country Club will be Two Best Balls of Four with a Wacky Ball.



Mike Janzer
Sales

The Liquid Fertilizer Experts

38 Hightstown-Cranbury Station Road
Cranbury, New Jersey 08512
(609) 448-0935 ♦ (800) 562-1291
Fax: (609) 443-8038
E-Mail: pfc@plantfoodco.com
www.plantfoodco.com
Cell Phone: (215) 280-6252

E-Mail: mjanzer@aol.com

There will be CPGCSA logo merchandise available for purchase at upcoming meetings.

Golf Shirts.....	\$35.00
Windshirts	\$40.00
Hats	\$10.00

Compass



Disease – Interval	Compass rate	Bayleton 50 rate
	per 1000 sq.ft.	per 1000 sq.ft.
Anthracnose – 14 to 21 days	0.15 oz.	1.0 oz.
Brown patch – 14 to 21 days	0.15 oz.	0.5 oz.
Gray leaf spot – 14 to 21 days	0.15 oz.	-
Summer patch – 21 to 28 days	0.20 oz.	1.0 oz.
Leaf spot – 21 to 28 days	0.15 oz.	-
Red thread – 21 days	0.20 oz.	-
Pink snow mold – late fall	0.25 oz.	1.0 oz.
Grey snow mold – late fall	-	2.0 oz.
Rust – 21 days	0.20 oz.	-
Dollar spot – 28 days	-	0.5 oz.

Always read and follow label directions

© 2003 Bayer Corporation

Heather and Gorse

By Mark DelSantro

I just finished watching a little bit of the US Open. Was it my imagination or was Shinnecock Hills a mirror image of a British Open venue, with the possible exception that *Poa annua* doesn't often experience high temperature stress across the pond in Great Britain?

As for the golf course itself... I love links style golf tracks! Links golf is the way golf was originally played and I hope some day golf courses will start to be maintained in the links course fashion... non-posh golf courses, with firm fairways and greens, and an abundant supply of heather and gorse! With the upcoming British Open and the PGA Championship both being held at links style golf courses in July and August, the summer major golf season should be especially fun to watch.

As for Shinnecock Hills, back when Corey Pavin won the Open there in 1995, I was still a little young, and definitely more stupid. While I remember watching it, I really can't say that I remembered the golf course that well. But this time around, I can say that I do believe I'll remember many of the holes for a long time to come.

The USGA has a tough, tough job. They walk a thin line in trying to set up a golf course that will "fairly" challenge the best players in the world, the key word being "fair." I certainly don't envy tournament agronomists and Sunday's golf course set up is exactly why. The "Redan" hole (#7) was not just hard... it was ridiculous! The tenth hole wasn't a whole lot better. In fact, the greens at Shinnecock, which had to be damn near dead by Monday, had to be the toughest greens I've ever seen.

The problem as I see it is that golf is a game in which 95-98% of your score is derived from the player's skill level and the remaining 2-5% is derived from the metaphysical forces in the universe that govern happenstance (a.k.a. luck). Based on the programming that I watched on Sunday, this skill to happenstance ratio was skewed horribly because of the course set up, course design, and environmental conditions, leaving luck to play a much more decisive role in determining victory and/or defeat.

Understand that I mean no disrespect to the eventual US Open Champion Retief Goosen and believe me that I'm a great believer in the concept of the more anyone plays/practices the luckier they will seem to be... furthermore, there is a sadistic part of me that actually enjoys watching the best in the world struggle for par... but I do believe that there should be a reasonable limit to how ridiculously hard a golf course is set up for any championship event. Ultimately, I believe that Shinnecock was set up beyond those reasonable limits.

Two other questionable issues that were discussed on TV were 1) rolling of the Redan hole on Saturday and 2) the hand watering of the green in between the groups, only after the first two groups putted the ball off the green.

First, rolling the 7th green... I didn't prefer the way it was announced that the maintenance department rolled this green by mistake. According to an inside source within the maintenance department, the maintenance team simply followed USGA orders when they rolled the 7th green. Either way, it sounds like there was a communication breakdown and it may have been better to not try to explain away the blame.

Second, regarding the syringing of the green in between groups... WOW! Now there's a precedent being set... I'm not sure that has ever been done before for the reason it was done. In other words, watering the green simply to slow it down and make it more playable, as opposed to watering to keep the green alive... I'm glad I wasn't involved in making that decision.

But as I said, the USGA tends to tow a difficult and delicate thin line... the perception is the damaging part. Joe Country Club watches the US Open, sees the golf course being pushed beyond its realistic limits, and thinks isn't this the same USGA that just told us to raise our mowing heights, increase our fertilization, hand water our greens, cut down our trees, etc. I often question whether the reality of the US Open being a world championship event and the education of what it takes to get a golf course into this type of condition ever gets properly translated to Joe Country Club.

As for the players in the Open... I certainly hope their fragile egos can handle the beating they received at Shinnecock. I know I was worn out and I never even lifted a finger to change the channel. As previously mentioned in a past heather and gorse... this game is not for the faint of heart... ultimately, one has to play the game with fear and arrogance to be successful, especially at the PGA Tour level. And fear is definitely the more important of the two factors! Fear is what motivates VJ Singh to practice more than anyone else. He admitted earlier this week that he's afraid that one day he'll wake up and lose his golf game!

If you think that's ridiculously far fetched, just ask David Duval... on top of the golf world not that long ago... a guy who shot 59 about five years ago, was just happy to participate and open with a fearless 83, followed up by a gutsy 82! And he was smiling the whole way! God bless him!

Speaking of physically talented, yet mentally challenged, what is going on with Tiger Woods? In the past few months, we've experienced some very un-Tiger-like performances. Two weeks in a row he was leading a PGA tournament going into the weekend and failed to finish off the deal. Previous to this he had won something like a gazillion straight times when in that situation. Whatever happened to his perpetual drive and unwavering focus?

While many will blame his poor performance on his separation from his swing coach, Butch Harmon, I'd rather believe that Tiger's courting of Elin Nordegren has his golf game on the back burner. And quite frankly, what red-blooded testosterone-laden American male can blame him!

As for his break-up with Butch... It is things like these that I simply don't understand. Tiger is/was on track to become the
.....continued on page 10.....



We Don't Make The Turf.
We Make It Better.

BASF




Insignia[®]
F U N G I C I D E


Emerald[®]
F U N G I C I D E

 **IprodionePro**^{2SE}
Fungicide

DRIVE[®]
75 DF HERBICIDE

Curalan[®]
Fungicide **EG**

PENDulum[®] Herbicide
AquaCap™

 **PropiconazolePro**
Fungicide

For more information, contact Ted Huhn
at 443-206-1095 or huhnt@basf.com.

Always read and follow label directions. ©2004 BASF Corporation. Insignia, Emerald, Curalan, Drive and Pendulum are all registered trademarks, and AquaCap is a trademark, of BASF Corporation. All rights reserved.

INSECT ALERT

An Update from the Staff of the Mid-Atlantic Region, USGA Green Section

June 1, 2004

For reasons unknown to even the best scientists, golf courses throughout the state of Pennsylvania are experiencing widespread outbreaks of the Annual Bluegrass Weevil (*Listronotus maculicollis*). The common name for this insect pest is the Hyperodes or annual bluegrass weevil. Grass is being lost even as this letter is being sent to courses which currently and formerly subscribe to the Turf Advisory Service offered by the USGA Green Section.

Our office has received numerous phone calls and our agronomists have made a number of emergency drop-by visits to assist Superintendents in diagnosing this problem. For those not familiar with this type of injury, it is caused by an insect that over-winters as an adult. In the early spring it lays an egg in the leaf sheath of the *Poa annua* plant. The egg hatches and the legless larvae feed inside the stem and emerge into the upper thatch layer. When the weather gets hot, effected *Poa annua* plants literally collapse. After all, the plants have been eaten from the inside.

Once in the thatch, the insect enters a non-feeding, resting stage. The body of the insect is white with a bronze colored head. (This creamy white stage of the insect is about the size of a large rice grain.) The larva develops into a pupa with immature wings and a distinct head with dark spots for eyes. The adult emerges to start the whole cycle over again, i.e., eggs are laid for more turf loss later in the summer.

This Special Letter is being sent to you primarily because the loss of *Poa annua* can be confused with other factors ranging from simple wilt to anthracnose. However, in the past three years, the USGA agronomists have been monitoring this problem and this year, what was once a nuisance problem and thought to be a future concern, now has become a VERY REAL PROBLEM.

To date, this insect has been identified throughout Pennsylvania. Its primary host is *Poa annua*, although creeping bentgrass can be affected. Scout your golf course...look for the white bodied larva...look for the adults which crawl on the surface and are a snout insect. Most importantly of all, do not accept some wilting *Poa annua* as just, wilting *Poa annua*. Find out why it is dying. You may be surprised as more than a few courses were this past week. Consult any insect control guide for control recommendations. You can also call our offices at 610/ 558-9066 (SE PA) and 412/ 341-5922 (W PA) or your state extension specialists.

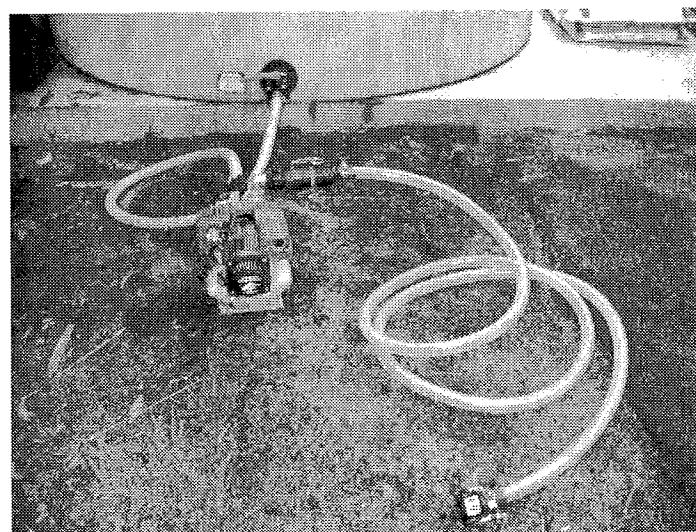
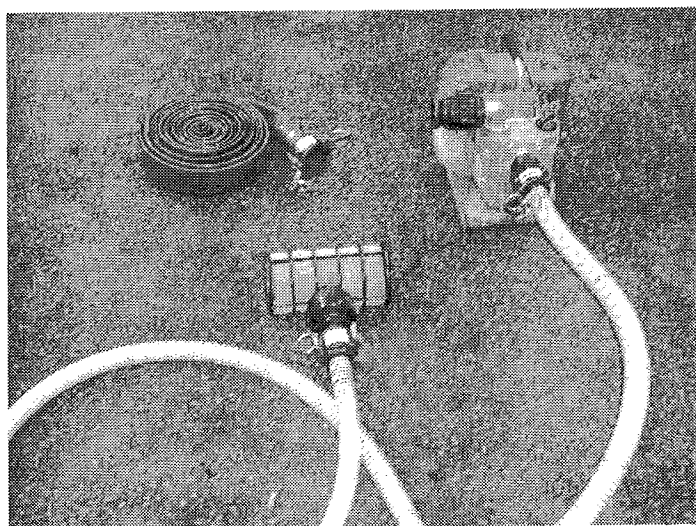
Mechanic Tip

By Steve Ludwig, CGCS
Gettysburg Country Club

We have 2 - 1" pumps for pumping out bunkers and transferring water. We were experiencing damage from sand going through the pump. To remedy this we installed a screen that is 50 mesh. This prevents the sand from going into the suction hose. Some pipe and banjo fittings were used to reduce the screen to fit the 1" suction line. Banjo fittings make removal of the screen very easy.

Because we have 2 pumps and several applications for the pumps we have recently installed banjo fittings for each application. All suction lines are 1" and all discharge lines are 1.5". This makes it easy to switch pumps and applications without requiring tools and much time.

Please feel free to contact Steve at (717) 344-0441 with any questions.



IMPRESSIVE

That's One Way to Describe Our Aerating Fountains

Fight weeds and algae with Otterbine's revolutionary Aerating Fountains. In addition to offering a wide range of interchangeable spray patterns, our Aerating Fountains are independently tested and come with an industry best five-year warranty. Otterbine aerators have been proven to create excellent circulation and oxygen transfer. Effective circulation is key in reducing algae and the beauty of an Otterbine spray pattern speaks for itself.

Philadelphia Turf & Otterbine What A Team!

Philly Turf has proudly represented Otterbine as a distributor and factory authorized service center for over 15 years. Providing a wide range of services, Philly Turf is your #1 source for all of your water quality management needs. Call us today to learn more!

Otterbine's extensive product line includes:

- Surface Spray Aerators
- Sub-Surface Aerators
- Giant Fountains
- Fountain Lighting
- Bioaugmentation
- Bunker Pumper DeWatering Pump



www.otterbine.com

#1 Source for All Your Water Needs



(215) 345-7200
Doylestown, PA 18901
www.philyturf.com

June Education Summary

Our speaker for the June meeting was Jeff Borger from Penn State University. At Penn State University, Jeff is a Research Support Technician responsible for managing a turfgrass field research program that encompasses the evaluations of grassy and broadleaf weed control and plant growth regulators. The title of Mr. Borger's presentation was "Poa seed head Suppression with Primo and Proxy".

Jeff said that the results of Primo/Proxy applications covered a full spectrum of results. He said not to expect to have better than 70% suppression. The positive of using Primo/Proxy is that there is no phytotoxicity. Jeff said that Embark is still the best seedhead suppressor, but it does cause phytotoxicity problems. The Primo/Proxy combination has seemed to work better when tank-mixed with a liquid nitrogen or bio-stimulant.

There was a lot of good discussion among those present, and the comments made seemed to support Jeff's statements.

It would be helpful to Jeff if you could forward the following information to him at PSU.

- Primo/Proxy or Embark application for seedhead suppression:
- What date(s) did you spray?
- What rate(s) applied?
- What product(s) were applied? (Primo/Proxy or Embark or other)
- What additive(s) were in with spray? (Daconil, Amino acid, Iron, etc)
- How many gallon(s) of water per 1000? (1 gal, 2 gal, etc)
- What was the air temp. on date applied? (61 and sunny, etc)
- Nozzle tips used (Tee Jet Flat fan, Delvan, etc)
- What do you estimate your % Poa Annua seed head control was? (65%, etc)

For Your Information

If you have any information that you would like included in the August newsletter, please fax information to Wanda at (717) 279-0368 or e-mail to cpgcsa@nbn.net by July 30, 2004.

Equipment For Sale

We will continue to advertise "used equipment" and "equipment wanted" in monthly newsletters. If you have anything that may be of interest, please contact Wanda.

AER-CORE, Inc.

Specialized Turfgrass Aerification

CONTRACT SERVICES USING:

- *Southern Green Soil Reliever*
- *TORO Fairway Aerator*
- *BLEC Ground Prep & Seeding*
- *Dakota Topdresser*
- *Drill & Fill By Hines Mfg.*

EQUIPMENT SALES FEATURING

- *Soil Reliever by Southern Green*
- *BLEC Blecavator & SandMaster*
- *Greensgroomer Brush*
- *Dakota Topdressers*
- *Weidenmann*
- *Galaxy Tires*

FOURTEEN YEARS IN THE AERIFICATION BUSINESS

- *PROVEN TRACK RECORD*
- *COMPETITIVE PRICES*
- *THOROUGHLY TRAINED OPERATORS*

*For Service of Demo Please Call:
610-327-3390*

Rich Valentine or Dennis DeSanctis, Sr.

The First Tee

During the August 31st joint meeting with PAGCS and CPGCSA, we will be taking donations for the "The First Tee of Susquehanna Valley at Crossgates Golf Course". The First Tee was developed to impact the lives of young people by providing learning facilities and educational programs that promote character-development and life-enhancing values through the game of golf.

Each child that submits a registration also has to have a fee of \$25 attached to it. Some children cannot afford this fee. This is where we as golf course industry professionals can give back to the community. We will be taking small donations at the August meeting hoping to support at least 10 children (\$250).

Please feel free to visit their web site at: www.thefirstteesvpa.org at your leisure to learn more about the "The First Tee". You can also donate your time with the kids as a volunteer in the evenings at Crossgates Golf Course.

If you have any questions please feel free to contact John Colo at 717-843-2190.

Heather and Gorse

....cont'd from page 5

greatest ever... his life was in total balance; his physical golf game was awesome, his mental game was unmatched... he was twenty-something, he was worth \$500 million (give or take), he had the entire golf world by the gonads, and he'd won every golf tournament he'd every had an interest in winning... his life was as fluid as water flowing down a river with rocks as his only obstacles... as he'd hit an obstacle, he'd simply, effortlessly flow around it, no matter what the problem. Enter his gorgeous Swedish fiancé and exit his swing coach and chief psychologist... suddenly gone is his perfect balance in life and his golf game. He can't seem to hit a fairway no matter what club he hits off the tee... at times lately, I'm not so sure he could hit water if he fell off a boat! As scary as it may appear, Superman actually seems human! Thank goodness he's still worth \$500 million (give or take). I guess it's just another grim reminder that none of us are impervious to failure, especially when the game of golf is involved.

Finally, the latest and last controversy I'll speak towards regards "the Big Easy", Ernie Els and his plea to the Royal and Ancient to ban anchoring putters to the body... i.e. either a long putter (Scott McCaren or a belly putter (Fred Couples). He believes it gives a golfer an unfair advantage in putting.

This is a subject I hold near and dear to my heart... I started putting with a long putter in 1995 after experiencing two years of the short putter yips. It totally changed my game by breathing new life into my overall short game. In my case, the long putter seriously minimized three putts, although my feel from long distance suffered. Since then, I've played around with long putters, belly putters, and short putters all in an effort to find a happy balance between long range, medium range, and short range putts. The problem is that I haven't been able to find that comfort zone and ultimately end up back with the long wand (which doubles as a potato masher and a snake killer while off duty!).

Statistically, if a large number of PGA Tour pros using the anchored putters were among the top putters in the game, then I'd understand Ernie's quest. But the numbers don't support that anyone has an unfair advantage by anchoring anything to their bodies, including a putter. My stand is such that if the rules allow it and it gives you a competitive advantage then you're foolish not to take advantage of it. It's kind of like playing pick, clean, and place in a tournament following a severe rain storm... it's not the way golf was meant to be played, but if you don't take advantage, it's your own fault.

Anyway, I believe Ernie needs to focus his energy on other political plights, such as saving the whales or something of the like. If he had employed the use of one of those belly putters maybe he'd have broken 80 his last round at the Open! Well, that's my links style, thin line walking, metaphysical, mentally challenged, testosterone laden, big easy, belly putting point of view from the heather and gorse.



SHEARON GOLF

A division of
Shearon Environmental Design Company

Construction / Maintenance

Restorations / Renovations

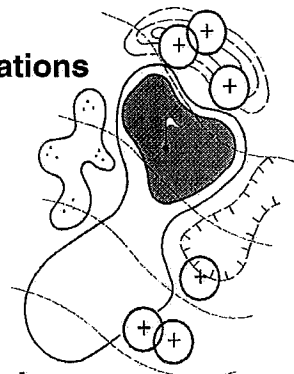
Arboriculture

Design

Drainage Experts

Custom Spray Applicators

Certified Irrigation Installers



Hopewell, NJ • (609) 466-0666
Plymouth Meeting, PA • (610) 828-5488
Contact Charlie McGill • www.shearongolf.com

Upcoming Events

- Penn State Turfgrass Field Days
August 11 and 12, 2004
Joseph Valentine Research Center
Landscape Management Research Center
University Park, PA
- Penn State Golf Turf Conference
November 9 – 11, 2004
Nittany Lion Inn, State College
- Eastern PA Turf Conference and Trade Show
January 11 - 13, 2005
Valley Forge Convention Center, King of Prussia
- Northeastern PA Turf Conference & Trade Show
January 27, 2005
The Woodlands Inn & Resort, Wilkes-Barre, PA
- Western PA Turf Conference and Trade Show
March 1-3, 2005
Greater Pittsburgh ExpoMart, Monroeville, PA

Aer-Core, Inc.

William Rahling, Rich Valentine
 Bob Eichert, Dennis DeSanctis
 47 Heron Hill Drive
 Downingtown, PA 19335
 (610) 327-3390

Andre & Son, Inc

Rich Gdovin
 2 Mill Street
 Montrose, PA 18801
 (607) 761-9465

A J Sales Associates

Chip Presendofer, Jake Straub
 1011 Church Road
 Orelan, PA 19075
 (215) 886-6011

BASF

Ted Huhn
 2819 Blue Ball Road
 Elkton, MD 21921
 (410) 398-8244

Bayer Corporation

John Wiblishauser
 318 E. Glenside Avenue
 Glenside, PA 19038
 (215) 887-8936

Davisson Golf, Inc.

Ron Nichols
 200-F Penrod Court
 Glen Burnie, MD 21061
 (800) 613-6888

Egypt Farms

Fred Heinlen
 P. O. Box 223
 White Marsh, MD 21162
 (410) 335-3700

Erb & Henry Equipment, Inc.

David "Tiny" Heimbach
 22-26 Henry Avenue
 New Berlinville, PA 19545
 (610) 367-2169

Finch Services, Inc.

Reid Mitchell, Tom Brago,
 Drew Weaver
 North Wales, PA
 (800) 875-TURF
 Westminster, MD
 (800)-78-DEERE

CPGCSA**Supporter List****Farm & Golf Course Supply**

Bennett Wartman
 7725 Ridge Avenue
 Philadelphia, PA 19128
 (215) 483-5000

Fisher & Son Company

Thomas Mahute
 3009 Gloucester Street
 Lancaster, PA 17601
 (717) 892-1455

Golf Cars Inc.

Paul Szymanski
 Box 247
 Buckingham, PA 18912
 (215) 340-0880

Grass Roots

Steven Chirip
 P. O. Box 336
 Mount Freedom, NJ 07970
 (570) 839-3399

Helena Chemical Corp.

Jim Byrne
 94 Tanglewood Drive
 Quarryville, PA 17566
 (717) 786-0547

Hollingers Sports 'N Turf

Leroy Hurst
 4126 Oregon Pike
 Ephrata, PA 17522
 (800) 650-1398

Hydro Designs, Inc.

Michael Krones, Paul McMahon
 3 College Avenue, Suite 8
 Frederick, MD 21701
 (301) 360-9663

Jade Run Sod Farm

P. O. Box 216
 Bethel, DE 19931
 (302) 875-7504

Lawn & Golf Supply Co.

Greg Borzok, Ted Zabrenski
 647 Nutt Road,
 P. O. Box 447
 Phoenixville, PA 19460
 (610) 933-5801

Northern Nurseries, Inc.

Dan Fick
 Rt. 115, Sullivan Trail
 Wind Gap, PA 18091
 (610) 863-6006

Outside Unlimited, Inc.

Golf Course Irrigation Division
 Ian H. Williams, CIC, CGIA
 4195 St. Paul Road
 Hampstead, MD 21074
 (443) 375-0255

Philadelphia Turf Company

Tom Drayer
 4049 Landisville Road
 Doylestown, PA 18901
 (215) 345-7200

Shearon Golf

Charlie McGill, Jr.
 337 Route 31
 Hopewell, NJ 08525
 (609) 466-0666

Simplot Partners

Don Hollinger, Dan Davis,
 Paul Wickey, Jim MacLaren
 858 Mt. Joy Road
 Manheim, PA 17545
 (717) 664-4204

Syngenta

Mark DelSantro
 75 Ramblewood Drive
 Glenmoore, PA 19343
 (724) 433-8332

Turf Management Assoc.

Thed Fraleigh, Jr.
 151 Valleybrook Road
 Lancaster, PA 17601
 (717) 917-5361

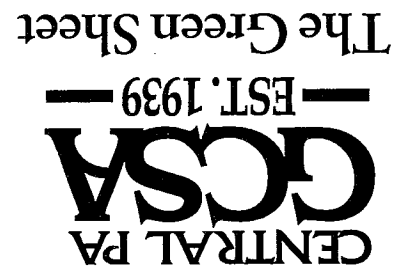
Tuckahoe Sand & Gravel

Ray Zelek, Ron Carusi
 Route 610 & Sharp Road
 Tuckahoe, NJ 08250
 (609) 861-2082

Watson Irrigation Supply, Inc.

Tim Watson, Chris Thomas
 4021 North Sixth Street
 Harrisburg, PA 17110
 (800) 999-1630

Wanda S. Fry - Executive Director
P.O. Box 1420
Lebanon, PA 17042
cpgcsa@nbn.net



2004 CPGCSA Meeting Schedule

August 31	Conestoga Country Club Joint Meeting with PAGCS
September 21	Honeybrook Golf Club
October 18	West Shore Country Club Annual Meeting